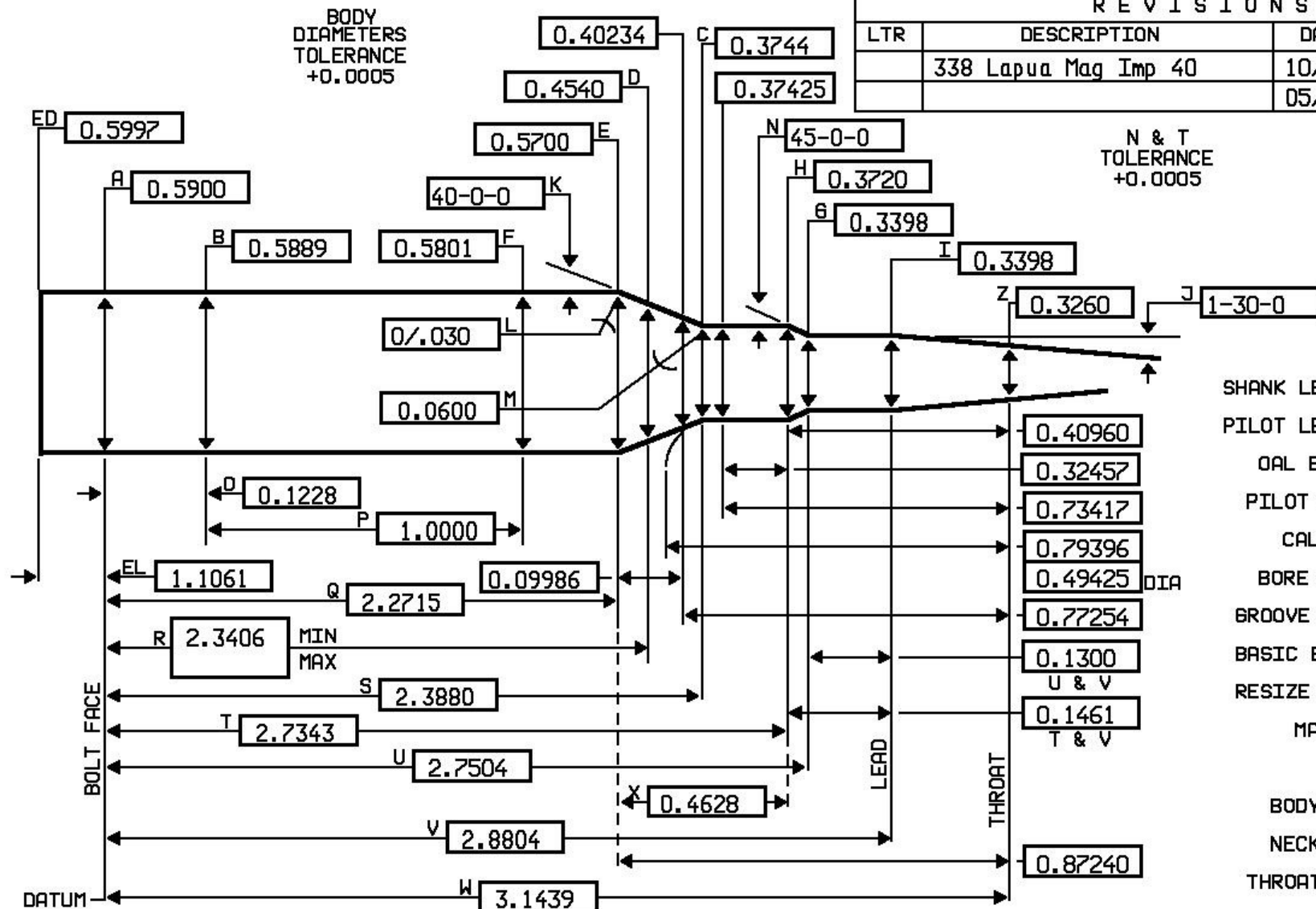


BODY  
DIAMETERS  
TOLERANCE  
+0.0005



## R E V I S I O N S

LTR	DESCRIPTION	DATE	APPROVED
	338 Lapua Mag Imp 40	10/03/07	CP
		05/06/15	JD

N & T  
TOLERANCE  
+0.0005

ANGLE  
TOLERANCE  
± 15 MIN.

SHANK LENGTH	1.7500
PILOT LENGTH	0.0000
OAL BLANK	6.0000
PILOT SIZE	0.3296
CALIBER	338
BORE SIZE	0.3300
GROOVE SIZE	0.3380
BASIC BRASS	338 LAPUA
RESIZE N.D.	0.3620
MARGIN	
TPI in 20 INCHES	
BODY TPI	0.08805
NECK TPI	0.06930
THROAT TPI	0.52372

DESIGNER

NAME JGS

PHONE ( )

LENGTHS  
TOLERANCE  
+0.0050

JGS

COOS BAY, OR USA  
97420

SIZE  
A

DWN.

DATE 05/10/17

RIMLESS OR REBATED RIFLE  
MINIMUM CHAMBER

SCALE NONE

PRINT # 4002

COMMENT: This design is similar to the Ackley requiring a 60-.004 headspace for proper crush when fireforming factory ammo.  
338 Lapua with 40 degree shoulder.