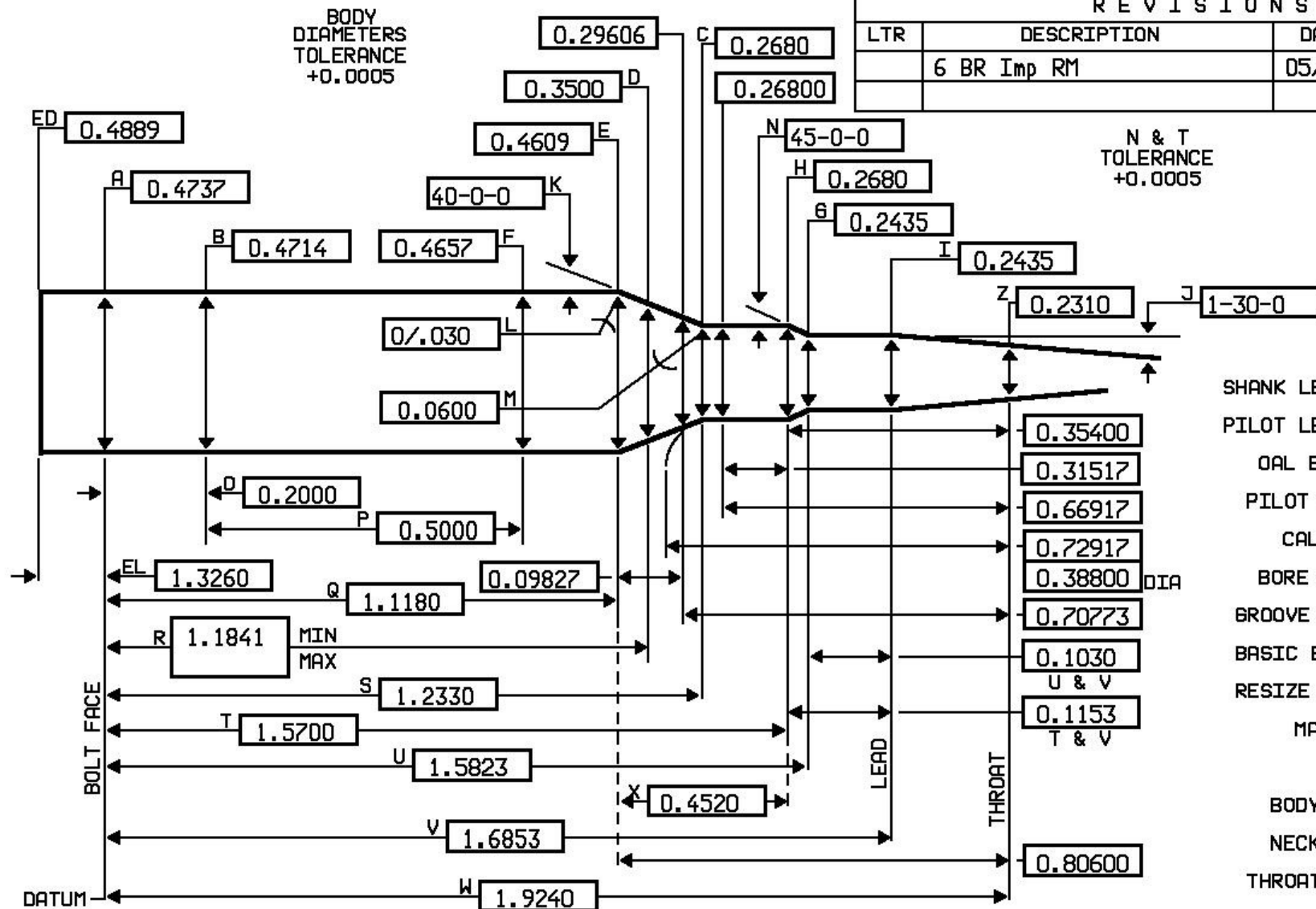


6 BR IMP RM

BODY
DIAMETERS
TOLERANCE
+0.0005

SHANK LENGTH	1.7500
PILOT LENGTH	0.0000
OAL BLANK	5.0000
PILOT SIZE	0.2356
CALIBER	6mm
BORE SIZE	0.2360
GROOVE SIZE	0.2430
BASIC BRASS	BR
RESIZE N.D.	0.2600
MARGIN	
TPI in 20 INCHES	
BODY TPI	0.11449
NECK TPI	0.00000
THROAT TPI	0.52372

DESIGNER
NAME Richard Miller
PHONE () _____

LENGTHS
TOLERANCE
+0.0050

JGS
COOS BAY, OR USA
97420

SIZE
A
DWN.
DATE 04/13/20
SCALE NONE

RIMLESS OR REBATED RIFLE
MINIMUM CHAMBER
PRINT # 6 BR IMP RM

COMMENT: Use a BR 60-.004 for a 60 gauge. This is headspaced similar to the Ackley style.
This design is the 6mm BR Norma with a 40 degree improved shoulder.