
FIELD MAINTENANCE
ILLUSTRATED LIST OF MANUFACTURED ITEMS

INITIAL SETUP:

Not Applicable

INTRODUCTION**Scope**

This work package includes complete instructions for making items authorized to be manufactured or fabricated at the field maintenance level.

How to Use the Index of Manufactured Items

A part number index in alphanumeric order is provided for cross-referencing the part number of the item to be manufactured to the page which covers fabrication criteria.

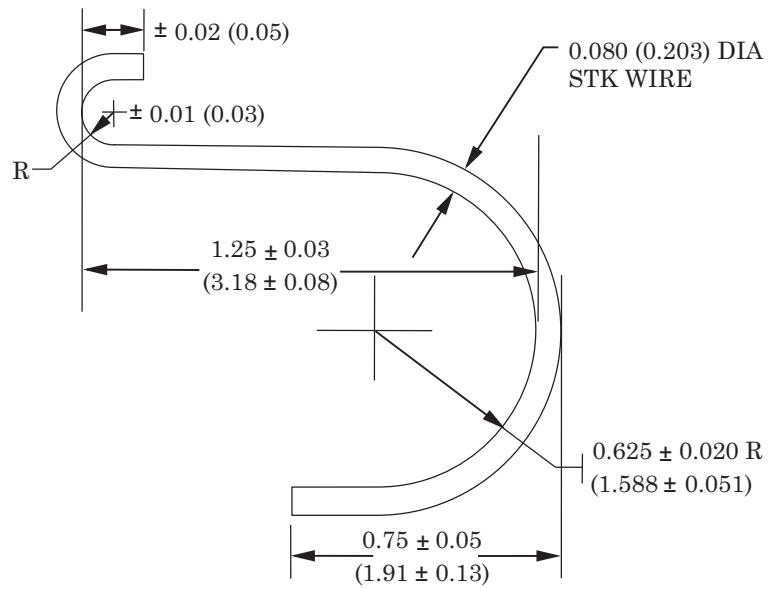
Explanation of the Illustrations of Manufactured Items

All instructions needed by maintenance personnel to manufacture the item are included on the illustrations. All bulk materials needed for manufacture of an item are listed by part number or specification number in a tabular list on the illustration.

INDEX OF MANUFACTURED ITEMS

Part Number	Nomenclature	Figure Number
NPN	Front sight detent depressor	1
NPN	Front sight post removal and installation tool	2
NPN	Pivot pin removal tool	3
NPN	Pivot pin installation tool	4
NPN	Slave pin	5
NPN	Adapter bar for M12 arms rack	6
NPN	Modified needle nose pliers	7

ILLUSTRATIONS OF MANUFACTURED ITEMS

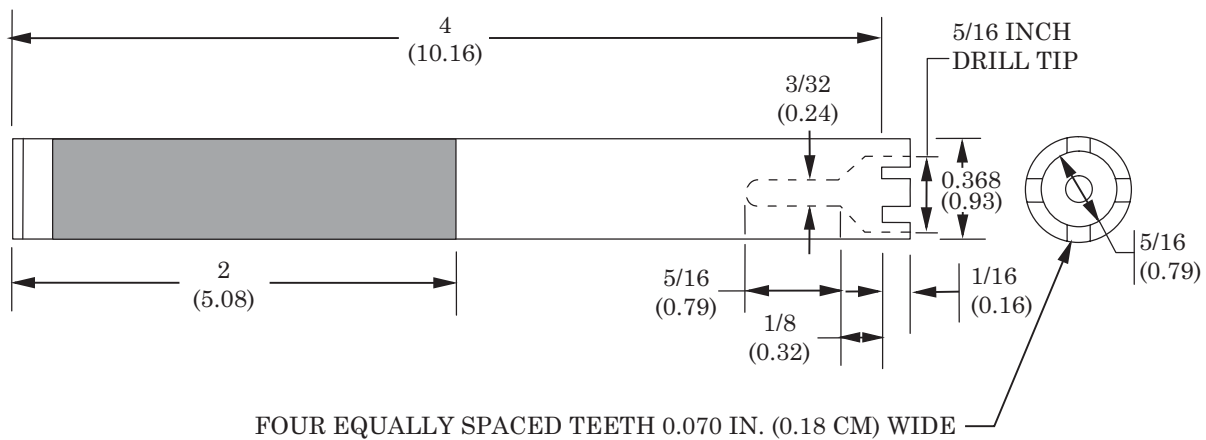


FABRICATE FROM 0.08 IN. MUSIC WIRE OR EQUIVALENT.
FINISH: NO. 5.3.1.2 OR 5.3.2.2 OF MIL-STD 17.

NOTE: ALL DIMENSIONS SHOWN ARE IN INCHES
WITH METRIC CONVERSION TO CENTIMETERS IN PARENTHESES.

1VS291

Figure 1. Front Sight Detent Depressor.



FABRICATE FROM 0.375 IN. ROUND METAL BAR,
ASTM A686, FSCM 81346, GRADE C, CLASS W2-09,
NSN 9510-00-640-4407 OR EQUIVALENT.

NOTES:

1. ALL DIMENSIONS SHOWN ARE IN INCHES
WITH METRIC CONVERSION TO CENTIMETERS IN PARENTHESES.
2. TEETH MUST BE HAND FILED TO FIT FRONT SIGHT POST.

1VS292

Figure 2. Front Sight Post Removal and Installation Tool.

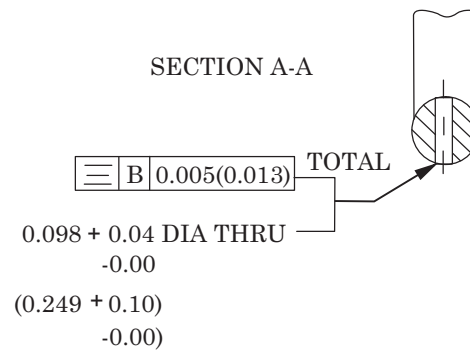
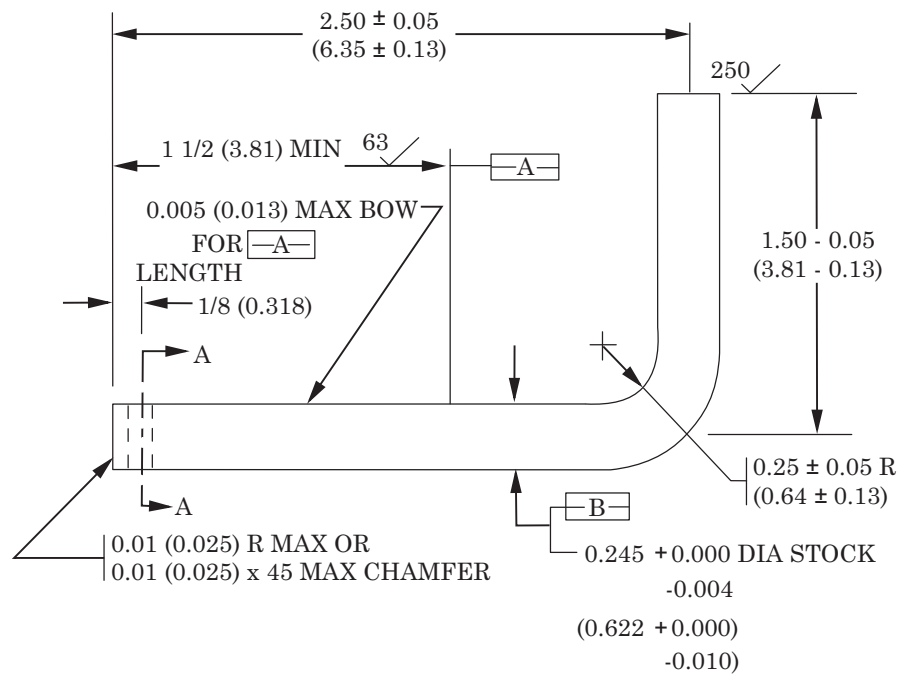
ILLUSTRATIONS OF MANUFACTURED ITEMS - Continued

FABRICATE FROM 1/16 IN. SOCKET HEAD SCREW KEY,
NSN 5120-00-198-5398 OR EQUIVALENT.

NOTE: ALL DIMENSIONS SHOWN ARE IN INCHES
WITH METRIC CONVERSION TO CENTIMETERS IN PARENTHESES.

1VS293

Figure 3. Pivot Pin Removal Tool.



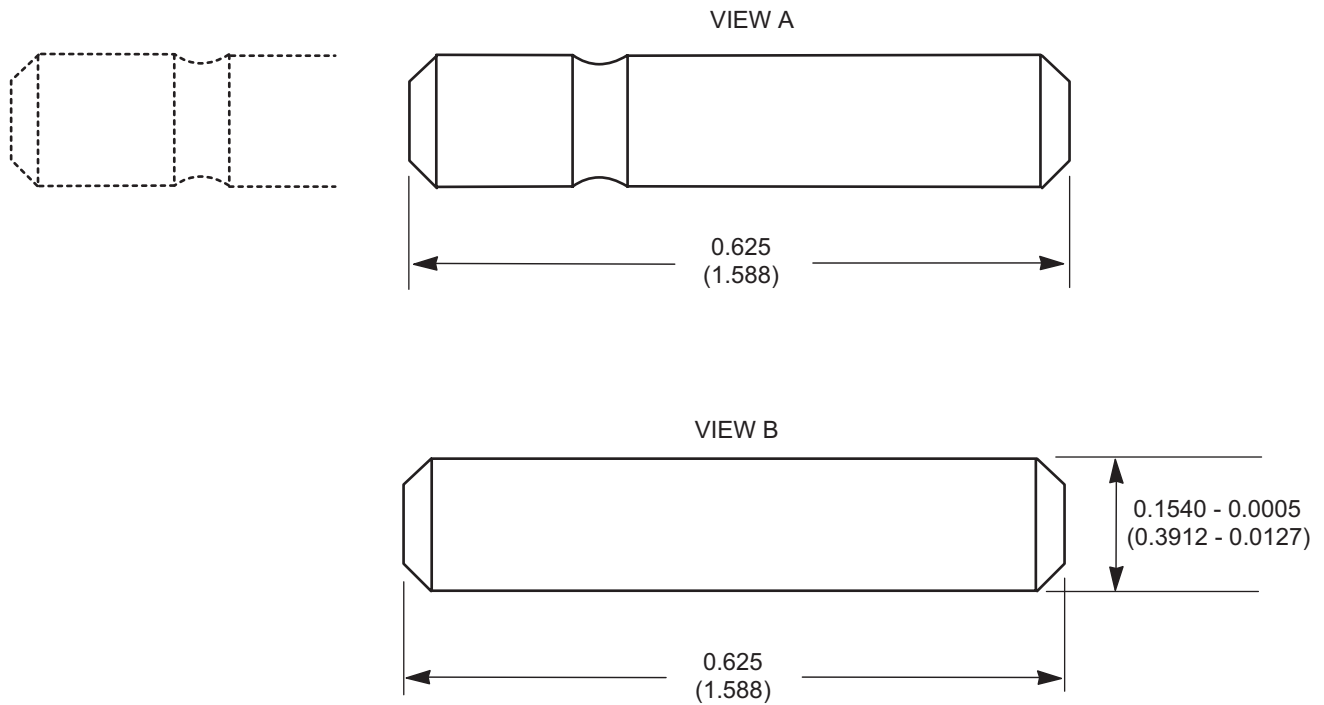
FABRICATE FROM 0.245 IN. STEEL AISI 1095 OR EQUIVALENT.
HARDEN AND TEMPER TO RC 57-61 FOR LENGTH -A-
FINISH: NO. 5.3.1.2 OR 5.3.2.2 OF MIL-STD-171.

NOTE: ALL DIMENSIONS SHOWN ARE IN INCHES
WITH METRIC CONVERSION TO CENTIMETERS IN PARENTHESES.

1VS294

Figure 4. Pivot Pin Installation Tool.

ILLUSTRATIONS OF MANUFACTURED ITEMS - Continued



FABRICATE FROM OLD TRIGGER PIN (VIEW A) PN8448609 OR
FABRICATE SLAVE PIN (VIEW B) FROM MATERIAL BLOCK,
WIRE, STEEL ALLOY, GRADE 4140, ASTM-A547 OR EQUIVALENT.

NOTE: ALL DIMENSIONS SHOWN ARE IN INCHES WITH
METRIC CONVERSION TO CENTIMETERS IN PARENTHESES.

1VS295

Figure 5. Slave Pin.