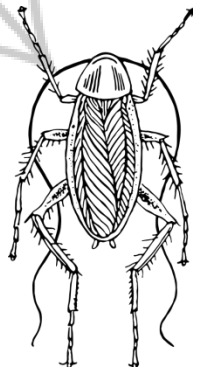
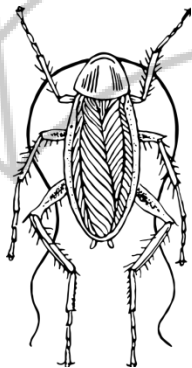
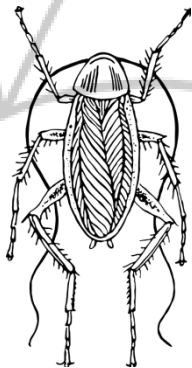
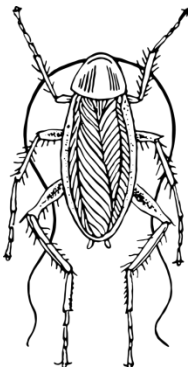
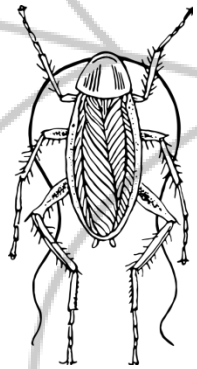
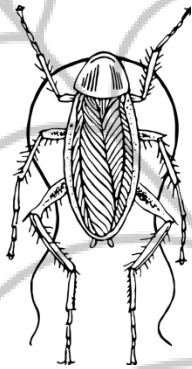
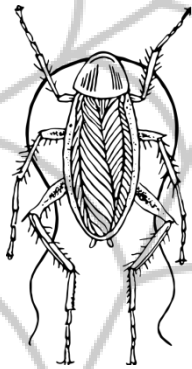
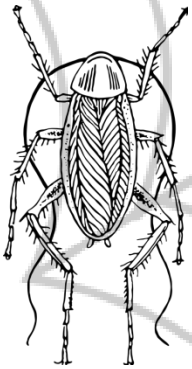
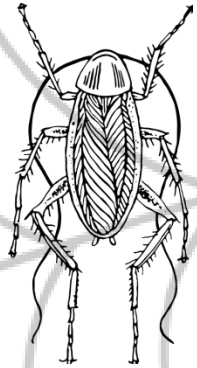
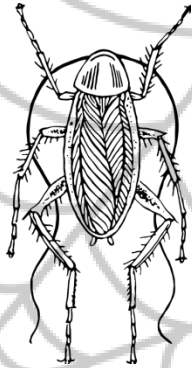
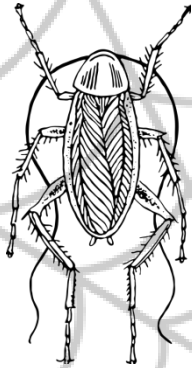
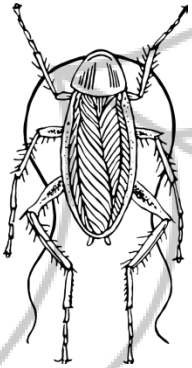
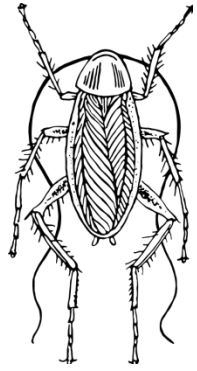
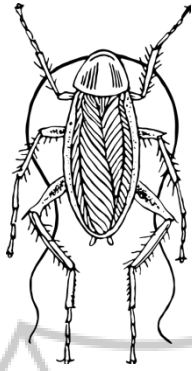
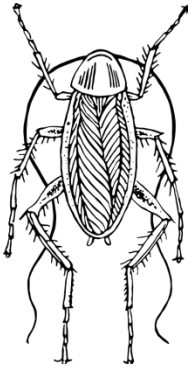
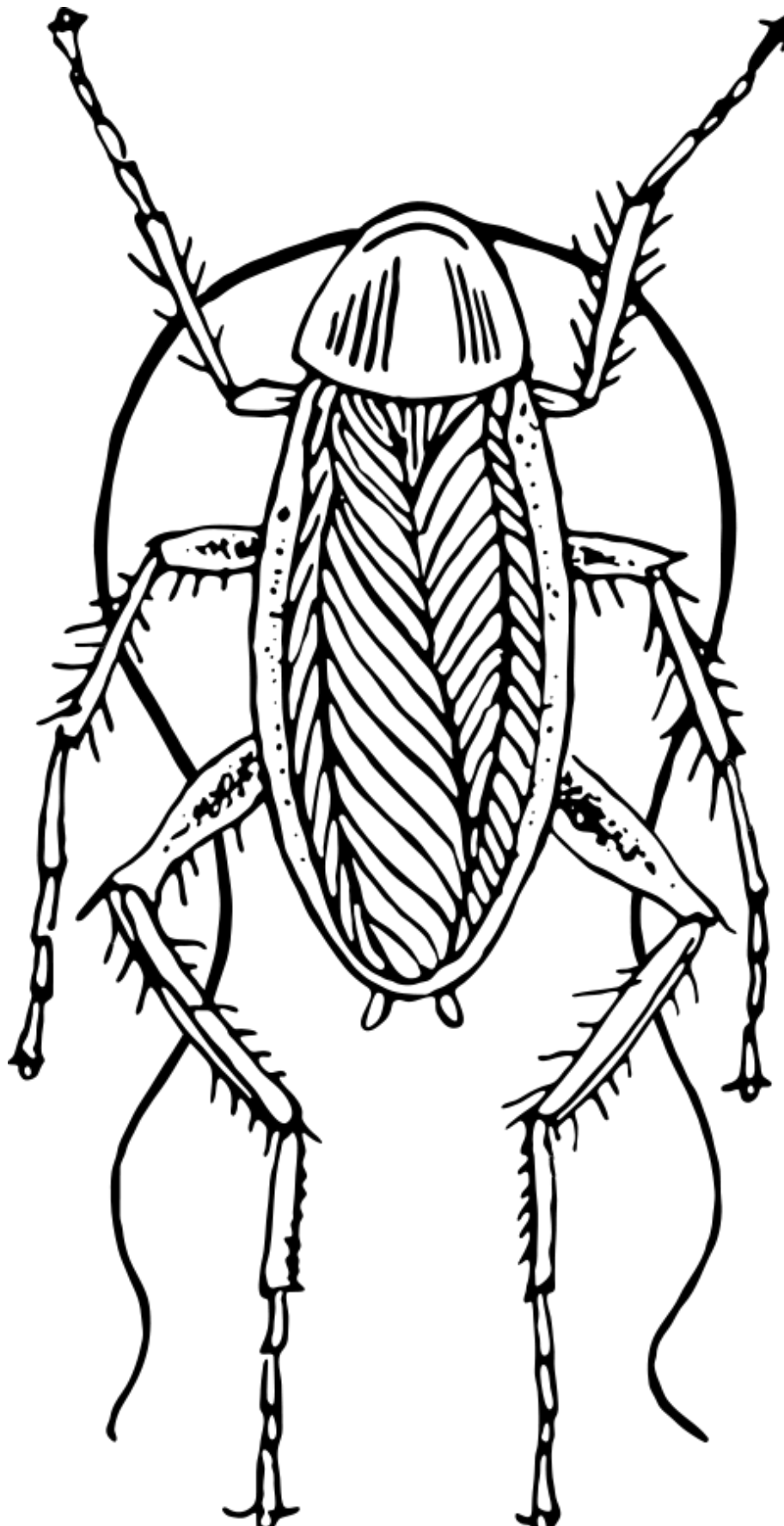
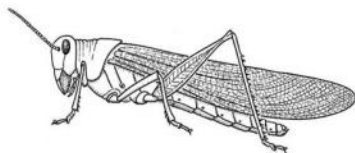


Cockroach Target



Texas Cockroach Target





Scale = inches 0 | 1 | 2

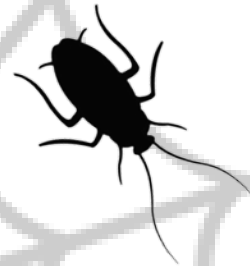
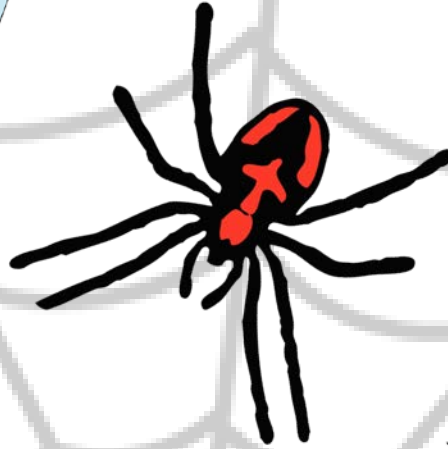
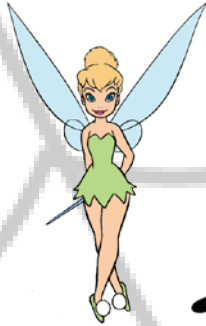
DATE: ___/___/___ WBM ___ YARDS B or P

1 SHOT EACH, WINGING DOESN'T COUNT

GRASSHOPPER IS 5 PTS x ___ HITS = ___ BEE IS 10 PTS x ___ HITS = ___ FLY IS 15 PTS x ___ HITS = ___

Bonus Bee / Grasshopper head shot points ___ TOTAL ___

One shot at each bug.
Each bug is worth 5 points.
Subtract 20 points if you hit
Tinkerbell.



A 6x5 grid of 30 circular icons, each containing a detailed illustration of a housefly from a different perspective (top, bottom, side, etc.). The flies are rendered in a realistic style with visible wing patterns and body details. The grid is composed of 6 rows and 5 columns of these circular icons.