



**St. Louis Benchrest Rifle Club**  
**Missouri F-Class Mid-Range State Championship**

**Distance:** All firing will be from the 600 Yard Line

**Date and Time:** Saturday-Sunday September 28-29, 2013 – 8:00 A.M.

**Fees:** \$60 – Adult  
\$45 – Junior

**Course of Fire:** (Matches will be shot in order)

Match 1 – Unlimited Sighters, 20 shots for record

Match 2 – 2 Sighters, 20 shots for record

Match 3 – 2 Sighters, 20 shots for record

Match 4 – 2 Sighters, 20 shots for record

Match 5 – Aggregate of matches 1 thru 4

Match 6 – Unlimited Sighters, 20 shots for record

Match 7 – 2 Sighters, 20 shots for record

Match 8 – 2 Sighters, 20 shots for record

Match 9 – 2 Sighters, 20 shots for record

Match 10 – Aggregate of matches 6 thru 10

Aggregate of matches 5 and 10 will determine the Champion.

**Eligibility:** The St. Louis Benchrest Rifle Club reserves the right to accept or reject any entry. Shooters from any state are welcome to shoot the match and compete for the prizes.

Missouri residents must be a current member of, or join the Missouri Sport Shooters Association on the day of the match to be recognized as the Missouri State Champion. This separate award is presented at the annual banquet, scheduled for April 5, 2014. Applications will be available in the Statisticians room. Annual Fees are \$20 for adults, \$5 for Juniors (under 21 before 12/31/2013).

**Rules:** Official NRA F-Class rules apply and will be enforced, including a rifle weigh in.

**Awards:** Competitors from all states are invited to compete for these awards. Plaques will be rewarded for top finishers in the following categories:

F-Open

F-T/R

Woman

Junior – eligible until Dec 31 of the year of his or her 20<sup>th</sup> birthday

Senior – eligible Jan 1 of the year of his or her 60<sup>th</sup> birthday

**Challenges:** A fee of \$2.00 will be charged for each challenge.

**Pit Service:** Competitors will score and pull targets.

**Release of Liability:** Any individual attending this match as a competitor or an observer must sign a release form.

**Entries:**

1. Make check out to **Bench Rest Rifle Club of St. Louis**
2. Mail to the following address:

**MO F-Class State Championship  
P.O. Box 1857  
Columbia MO 65203**

---

**MATCH ENTRY FORM  
MISSOURI F-CLASS MID-RANGE STATE CHAMPIONSHIP  
SATURDAY, APRIL 22<sup>ND</sup>, 2012**

**FEES:**

**ADULT: \$60.00**

**JUNIORS: \$45.00**

**CATEGORY:**

F-OPEN \_\_\_\_\_ F-T/R \_\_\_\_\_  
WOMAN \_\_\_\_\_ SENIOR \_\_\_\_\_ JUNIOR \_\_\_\_\_

**NRA "F" CLASS MID-RANGE PRONE CLASSIFICATION: HM MA EX SS MK UNC**  
(circle one)

**NRA Competitor number** \_\_\_\_\_

**YEAR OF BIRTH** \_\_\_\_\_

**NAME** \_\_\_\_\_

**ADDRESS** \_\_\_\_\_

**CITY/STATE/ZIP** \_\_\_\_\_

**TELEPHONE NUMBER** \_\_\_\_\_

**EMAIL:** \_\_\_\_\_

**Equipment List (Optional)**

**Action** \_\_\_\_\_ **configuration (RB/LP etc.)** \_\_\_\_\_

**Barrel** \_\_\_\_\_ **twist** \_\_\_\_\_ **length** \_\_\_\_\_

**Stock** \_\_\_\_\_ **model** \_\_\_\_\_

**Scope** \_\_\_\_\_ **power** \_\_\_\_\_

**Bipod/rest** \_\_\_\_\_

**Caliber** \_\_\_\_\_ **bullet** \_\_\_\_\_ **brass** \_\_\_\_\_

# Bench Rest Rifle Club of St. Louis

## Travel Planner

Benchrest Club is located about 7 miles northwest of Wright City, MO. Wright City is approximately 50 miles west of the St. Louis Metropolitan area. Wright City has limited facilities but nearby Warrenton and Wentzville have lots of options.

Warrenton, MO, located about 6 miles west of Wright City, at Exit No. 193, offers a wide selection of motels and restaurants.

Wentzville, MO is approximately 9 miles east of Wright City, at Exit No. 208, also offers a lot of choices for motels and restaurants.

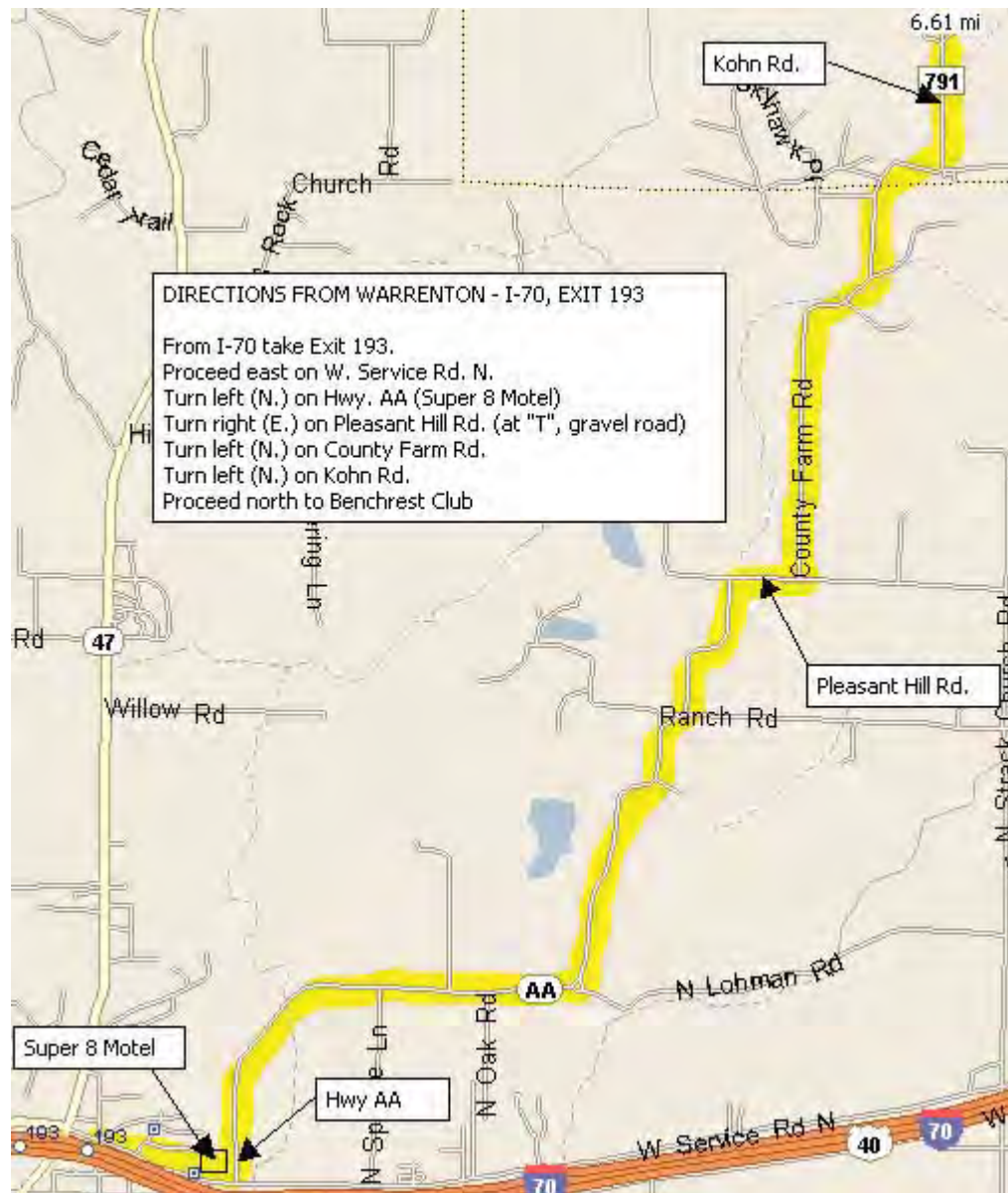
### Hotels

Exit No.	Motel	Toll-Free Phone	Local Phone
214	Days Inn, Lake St. Louis	800-329-7466	636-625-1711
212	Holiday Inn, Lake St. Louis		636-327-7001
210B	Knights Inn, Wentzville	800-843-5644	636-327-5212
210B	Budget Inn, Wentzville		636-639-1987
208	Super 8 Motel, Wentzville	800-800-8000	636-327-5300
203	Best Western, Foristell	800-937-8376	636-673-2900
199	I-70 Budget Motel, Wright City		636-745-8016
193	AmeriHost Inn, Warrenton	800-434-5800	636-456-6000
193	Days Inn, Warrenton	800-329-7466	636-456-4301
193	Super 8, Warrenton	800-800-8000	636-456-5157

### Contact Info

Benchrest Club of St. Louis  
2045 Kohn Rd.  
Wright City, MO 63390  
636-745-8144  
636-745-7868 fax  
[www.shootingstl.com](http://www.shootingstl.com)

## Directions from Warrenton, MO



## Directions from Wright City, MO

